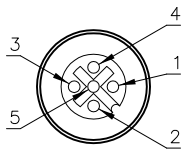
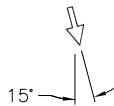
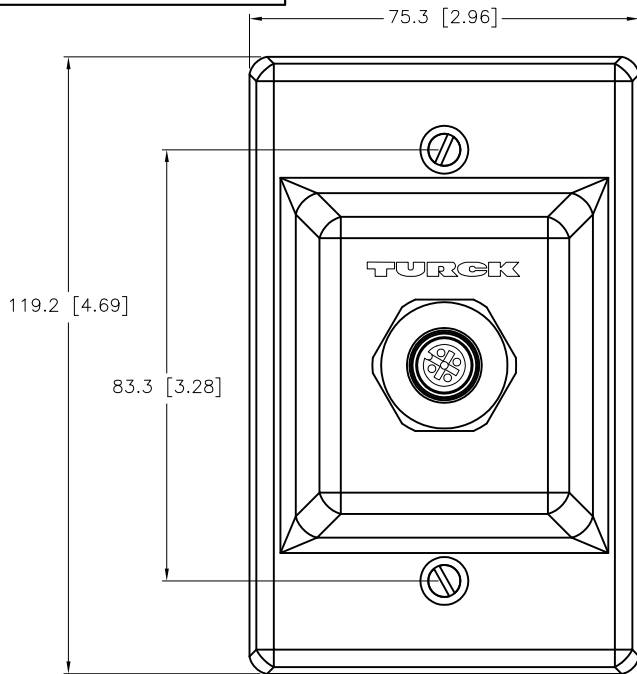


FEMALE END VIEW



- 1 = BARE (SHIELD)
- 2 = RED (+ VOLTAGE)
- 3 = BLACK (- VOLTAGE)
- 4 = WHITE (CAN_H)
- 5 = BLUE (CAN_L)

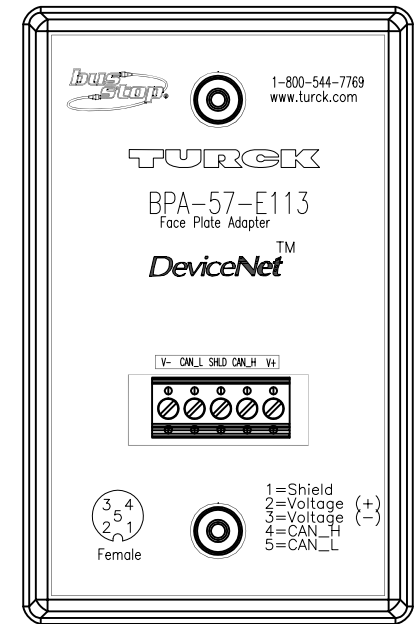
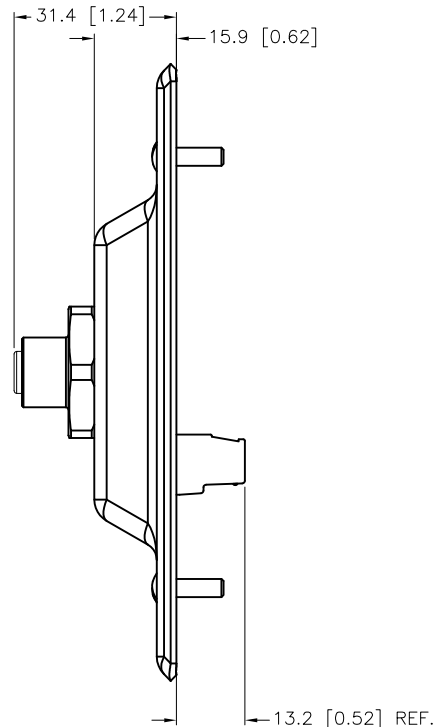


NOTES:

1) GASKET NOT SHOWN FOR CLARITY.

↑ = 90° CORDSET CABLE DIRECTION

SPECIFICATIONS	
WALL PLATE MATERIAL	16 GA. 316 STAINLESS STEEL
RECEPTACLE HOUSING MATERIAL	STAINLESS STEEL, PASSIVATED
SEALING GASKET MATERIAL	CLOSED CELL POLYETHYLENE FOAM
MOUNTING HARDWARE (SUPPLIED)	6-32 SCREWS, STAINLESS STEEL
CONTACT CARRIER MATERIAL	NYLON OR TPU
CONTACTS	BRASS/GOLD
OPERATING VOLTAGE	250 V
OPERATING CURRENT	4.0 A
PROTECTION CLASS to DIN 40050	IP 67 - ONLY WHEN ALL RECEPTACLES ARE COVERED WITH PLUGS OR CONNECTED
OPERATING TEMPERATURE	-40°C to +70°C (-40°F to +158°F)



SOURCE DRAWING - FOR REFERENCE ONLY

RELATED DOCUMENTS		3RD ANGLE PROJECTION		THIS DRAWING IS CONFIDENTIAL AND THE PROPERTY OF TURCK INC. USE OF THIS DOCUMENT WITHOUT WRITTEN PERMISSION IS PROHIBITED.		<div>TURCK</div> <div>3000 CAMPUS DRIVE MINNEAPOLIS, MN 55441 1-800-544-7769 (763) 553-7300 (763) 553-0708 fax www.turck.us</div>					
1.				DRFT	DF	DATE	09/19/05	DESCRIPTION BPA-57-E113			
2.				APVD		SCALE	1=1.5				
3.		ALL DIMENSIONS DISPLAYED ON THIS DRAWING ARE FOR REFERENCE ONLY		UNIT OF MEASUREMENT				IDENTIFICATION NO. U3-00666		REV D	
4.				MILLIMETER [INCH]							
MATERIAL		CONTACT TURCK FOR MORE INFORMATION		DO NOT SCALE THIS DRAWING				FILE: u3-00666		SHEET 1 OF 1	
FINISH											

D	UPDATE CONTACT CARRIER MATERIAL	RDS	02/23/12	27902
REV	DESCRIPTION	BY	DATE	ECO NO.